

Post by Ron Lilburne on the Official Seawind Owners Club, Facebook group April 1, 2026

Ron's post:

Firstly explored options for replacement with new. Arrived at repair as replacement was either too big, required modifications I didn't want to make, read expense into that.

Needed to be at a place where we could remove stove and have a workshop available, not a job to do on board. Being permanent live aboards was a matter of waiting for opportunity. We are on Tamar River, Tassie.

Contacted Dometic, the company who took over SMEV. They were very helpful and supplied parts, see invoice copy. They couldn't quite match model to parts but the 335 shares spare parts with numerous other models. In this case it was important to measure the thermocouples as the ones they advised were incorrect length. Basically longer rather than shorter is way to go.

Removal of unit was relatively easy by boat standards. The only gas part needing to be removed was the main connector between supply and stove. Difficult to access and 2 spanners to decouple. Very simple. Off to my sisters garage where we set up a bench giving access to all sides.

First step was removal of top, then side panel the controls are on. Both panels fixed by self tappers, the top was also secured to the gas jets by easily removed nuts. Once in it was easy to remove the cables making up the thermocouples and igniters. No tampering with actual gas fittings required.

Old parts were obviously age affected, new parts matched connections perfectly. Placing the thermocouples and igniters onto the stove tray was tricky, but patience is a virtue as they say and all done.

Fixing the gas jets back to the tray was simple, three hands would have been nice. Once in place was just a matter of running cables to appropriate spots and plugging in. Not rocket science, no special skill required.

Some notes with pics. Hope this helps others faced with similar dilemma. (We tried 3 gas fitters, no one wanted job. One even reported parts no longer available, in other words didn't try.)

Stove removed and on deck



Nice cavity where stove was, yep I cleaned it up



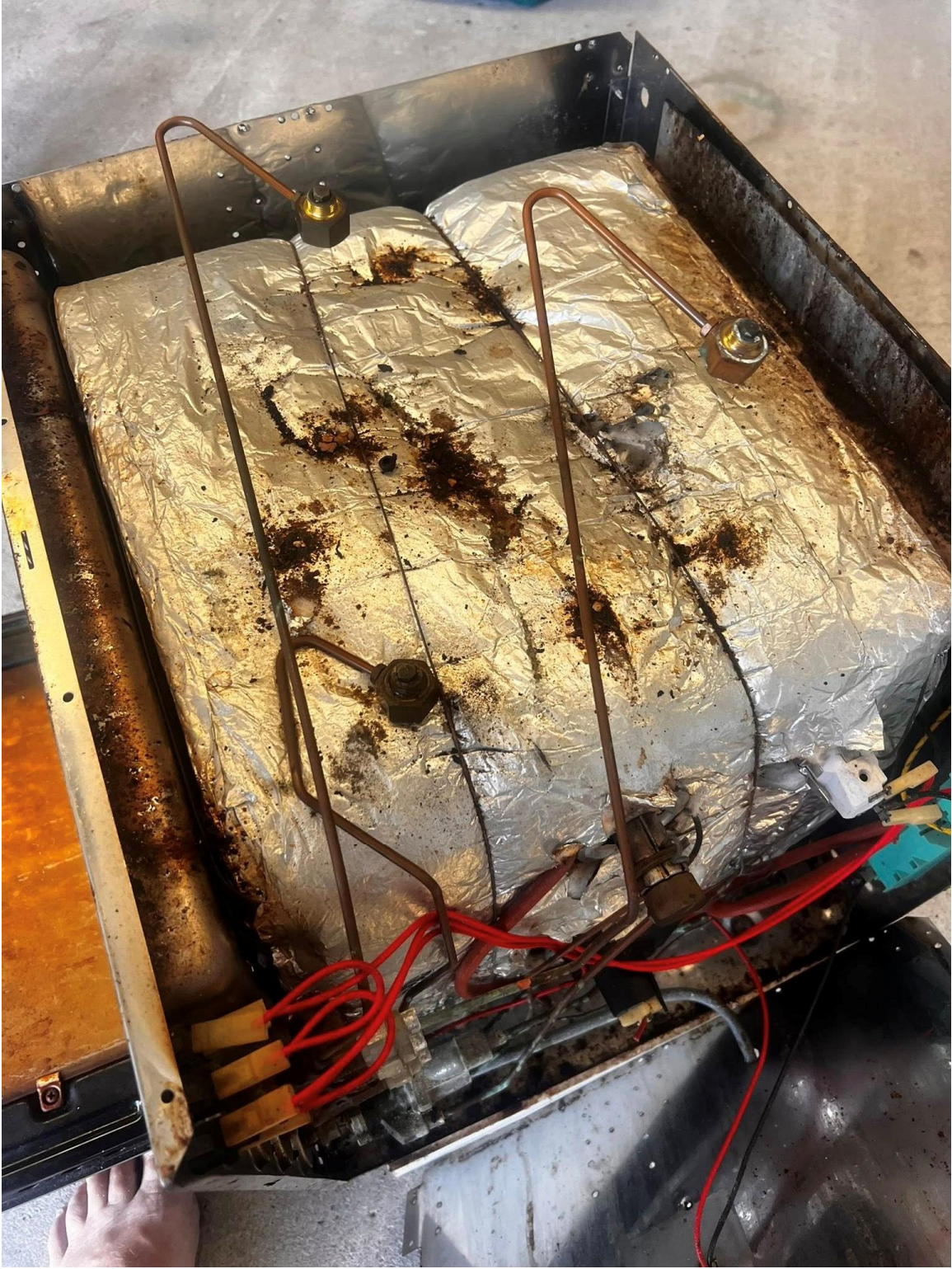
Control side panel, shows electrical and gas input fitting.



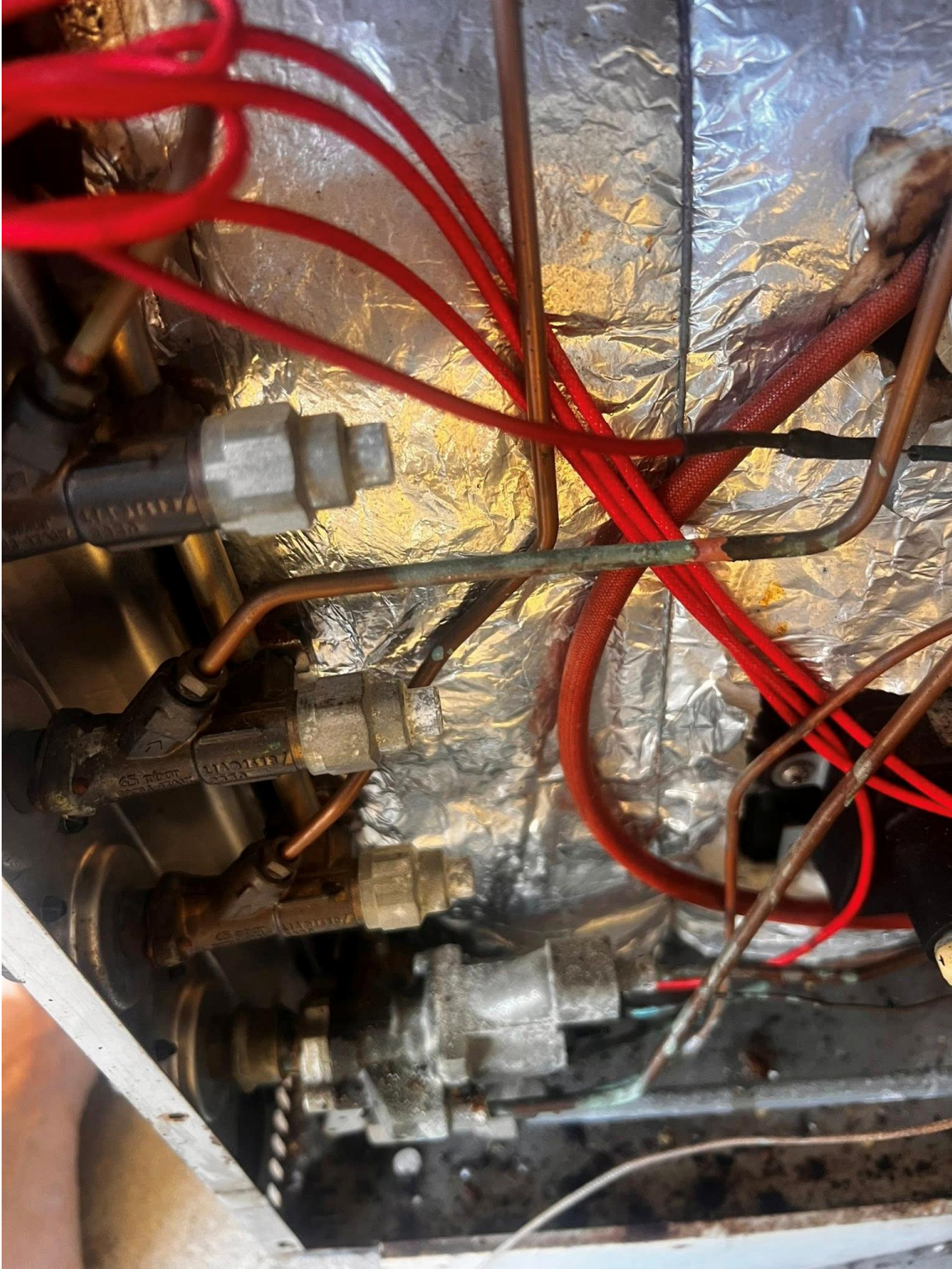
Stove top removed, gas jets were secured by a single nut, came loose easily Stove top removed, gas jets were secured by a single nut, came loose easily



Gas jets and electrical cables, I discovered we had a rotisserie at this point, totally cooked along with compromised wiring which I removed



The 3 points where thermocouples plug in, simply unplug and plug in new. No special skill here



Old thermocouples



New thermocouples next to old one



New and old igniter

