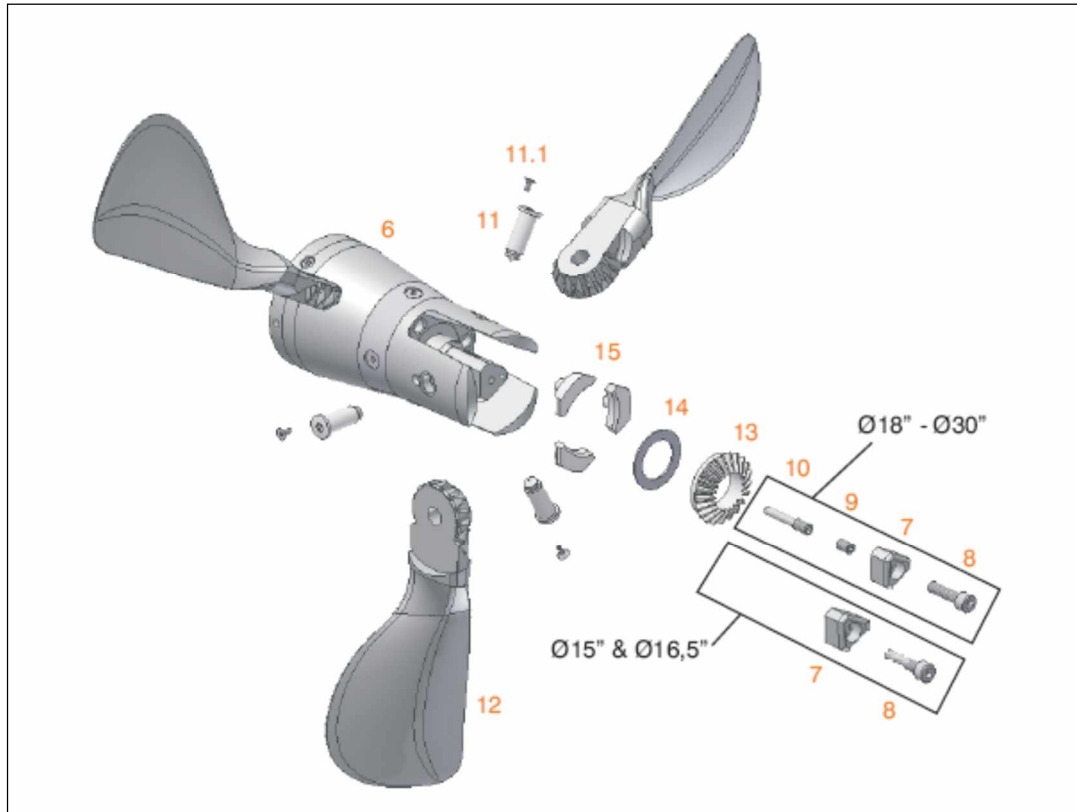


Gori Propeller Lash Adjustment



There is a spacer (labeled #14) behind the gear wheel (labeled #13), this spacer comes in various thicknesses in 0.1mm increments. If there is play in the propeller blades the spacer needs to be replaced.

1. To find the correct thickness spacer, measure the existing spacer (#14)
2. Depending on the amount of “play” wear/backlash between the center gear teeth (#13) & blades pick the next size up spacer – 0.1mm or bigger.
3. Do a “dry” fit (no Loctite) as you want to check that the three (3) blades will move easily, and are not “sticking”
4. The spacer thickness is determined by “feel” – checking the backlash between the blade teeth & center gear
5. There is no ‘magic’ set thickness for a spacer
6. Back down one thickness from the maximum thickness that you can install to ensure smooth blade Forward to Reverse movement

Notes:

- The GORI folding design is unique in that the blade loading is taken up on the center gear & blade teeth- NOT the blade pin & blade pin hole (other brands are a different design that leads to an oblong out of round blade pin hole & therefore loose blades)
- It is normal that after propeller use, wear will occur from the blade loading on all the components and the spacer thickness will need to be increased over time