

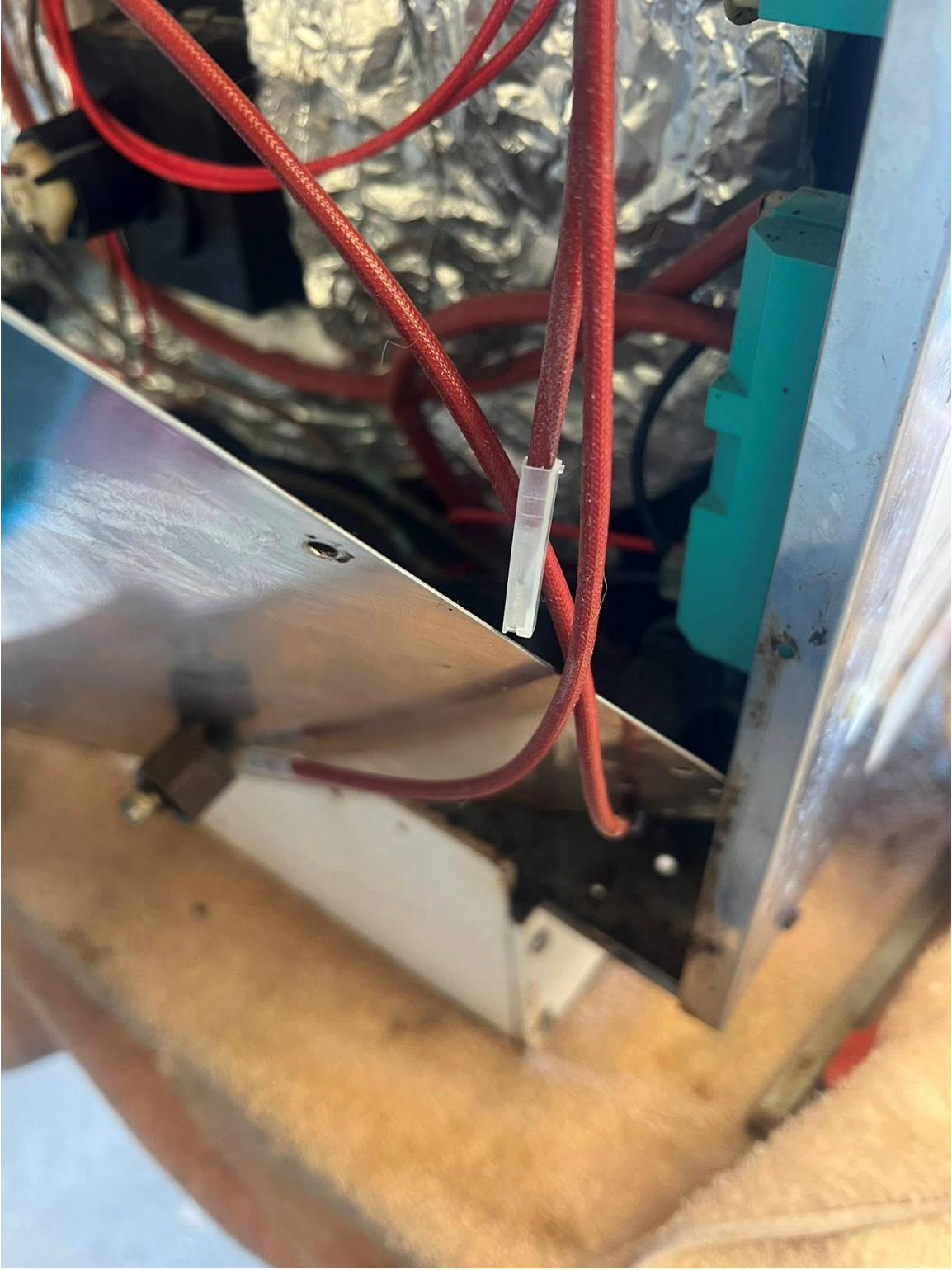
Thermocouples and igniters in place



Pic of igniter in place note spring. Old one had a circlip to keep in place, this is better



Ignition cables prior to plugging in. Just a simple connector inside plastic container



Igniters plugged in



New thermocouples awaiting plugging in.



3 thermocouples plugged in, drop dead simple



Stove back together looking very shiny



Back on boat



Part numbers, lengths and pricing from Dometic

Australia

CUSTOMER NO.	OUR REF.	CUSTOMER REF.	ORDER DATE	INPUT	SENT BY		
10403	SO3347967	4825P	19/03/26	JENNY.DA	STAR TRACK EXPRESS		

QTY	ITEM CODE	DESCRIPTION	UNIT PRICE	UNIT	DISC %	LINE TOTAL EXCL. GST	LOC
1	4453001381	THERMOCOUPLE 350MM 8022/8023	\$ 77.91	Each		\$ 77.91	1CL
2	4453001382	THERMOCOUPLE 500MM MO9722	\$ 77.91	Each		\$ 155.82	1CL
3	105310319	PLUG SPARK FRONT 550MM DOM	\$ 55.00	Each		\$ 165.00	1CL
1	HANDLING FEE	HANDLING FEE	\$ 9.09	Each		\$ 9.09	1CL
1	FR	FREIGHT	\$ 19.50	Each		\$ 19.50	1CL
		Paid by shopify					
		Warning: some spare parts need to be fitted by a suitably qualified and licensed technician					
		- we recommend using an authorised Dometic					